



Riviera Garden Club

Sea Breeze

COSTA VERDE DISTRICT, CGCI, PACIFIC REGION, NGC

Volume 64, Issue No. 4

June, July, August, September 2022

FROM OUR PRESIDENT



Carolyn Pohlner

Happy Fall!

I hope you and your families had a restful, relaxing summer and are ready to return to gatherings with the Riviera Garden Club. I look forward with joy and excitement to welcoming back members comfortable attending. We remain cautiously optimistic as the Covid numbers continue to decline, and we'll maintain safe social distancing practices as we attempt to carry on in person. It is our fervent hope that our meetings and special events can take place face-to-face, beginning with our very first General Meeting at the Mary & Joseph Retreat. (see CALENDAR OF EVENTS)

I invite all members, their families and friends to join us for our Fall fundraiser - "Fall Into Fashion" Fashion Show, Saturday, Oct 8th. This marks the first time RGC will hold a Fashion Show outside the store! Members will model fashions from Chico's. (see CALENDAR OF EVENTS)

On October 25, "The Bee Lady", **Alysa Quitariano** will keep us abuzz us with her educational and entertaining talk about bees! You won't want to miss that! (see CALENDAR OF EVENTS)

Stay tuned for future Sea Breeze newsletters with info about our November General Meeting and a return to Los Verdes Golf Club for our Holiday Luncheon Dec. 11th.

See you in September!

Carolyn Pohlner

IN THIS ISSUE

| | |
|--|------------|
| From Our President | 1 |
| In This Issue | 1 |
| Calendar of Events | 1 |
| Member News and Tidbits | 2 |
| Photos of the Madhatter | 3,4 |
| Landscape Awards | 4 |
| Charlie Sappington <i>Original Poem</i> | 4 |
| Articles by Judy and George Unrine | 5,6 |

CALENDAR OF EVENTS

Sept. 27 Tuesday RGC general meeting at Mary and Joseph Center. Docent led tour, Sandwich bar luncheon. **Cost \$20** We will accept payment the day of the meeting, but you must make your reservation in advance, with your sandwich choice indicated - tuna salad, egg salad, cold cuts, cheese, and all the garnishments. **Contact Geneva Martin BEFORE Sept 20th** for your reservation

Oct. 8 Saturday "Fall into Fashion" fashion show at the historic Torrance Woman's Club Clubhouse at 1422 Engracia Avenue, in Old Torrance 90501. **Tickets only \$35!** Cookies, cake and coffee will be served. More details to follow!

Oct. 25 Wednesday RGC general meeting Zamperini Field Torrance Airport. Bee lady, **Alysa Quitariano.** For more information about Alysa and her career, check out the following article from the Palos Verdes Pulse:

[She Works Hard for the Honey Money: The Career Path of a Worker Bee By Beekeeper & Expert Alysa Quitariano — Palos Verdes Pulse](#)

HAPPY BIRTHDAY RGC MEMBERS!

| June | July | August | September |
|------------------|--------------------|---------------------|--------------------|
| 8 Judy Unrine | 10 Wendy Tsuji | 9 Bernice Slocovich | 2 Lynn Fernandez |
| 12 Regina Taylor | 20 Carolyn Pohlner | 14 Emily Lacina | 5 Aleen Houston |
| 18 Pat Heilmann | 23 Gloria Balcom | 14 Margery Phillips | 20 Laurie Vaillant |
| 27 Diane Hayden | 30 Geeta Gupta | | 21 Cynthia Lundin |
| 28 Leony Filler | 31 Bobbie Davison | | 24 George Unrine |
| | | | 26 Kathryn Joiner |

SLATE OF RIVIERA GARDEN CLUB OFFICERS FOR 2022-2023

| | |
|--------------------------------------|-----------------------------------|
| PRESIDENT | Carolyn Pohlner |
| 1st VICE PRESIDENT | |
| • Programs | Toni Ziegler and committee |
| • Excursions | Marie Hoffman |
| 2nd VICE PRESIDENT | |
| • Yearbook | Geneva Martin |
| • Newsletter | Marilyn Rubin |
| 3rd VICE PRESIDENT | |
| • Member services | Lynn Fernandez |
| • Member services | Regina Taylor |
| TREASURER | Geneva Martin |
| SECRETARY | Marilyn Rubin |

GET WELL WISHES

These RGC members would appreciate a CARD FROM YOU!

Ellyn Meikle - Ellyn is recovering from a severely broken ankle.

Alberta Brice - Alberta is also recovering from a broken ankle on the same side of her body as her recent hip replacement.

RGC 2022 SCHOLARSHIP WINNERS



RGC scholarship winners **Bruce Kok** and **Kayla Fort** from South High School in Torrance with Riviera Garden Club member **Pati Johnson**.

MAD HATTER INSTALLATION, LUNCHEON AND HAT PARADE AT MARIE HOFFMAN'S GARDEN
PHOTOS BY CLAUDEENE LYON



MORE OF THE MADHATTER PARTY JUNE 7, 2022



RIVIERA HOMEOWNERS ASSOCIATION and RIVIERA GARDEN CLUB
LANDSCAPE OF THE MONTH AWARDS



**July 2022 109 Via Colusa
The Frieden residence**



**April 2022 533 Paseo de las Estrellas
The Talbot residence**

POEM BY CHARLIE SAPPINGTON

SUMMER

Ah! Summer, you're finally here!

We waited through Spring to bring you near.

Our garden is so abundant with fruits on the vine.

We have squash and tomatoes that we eat all the time.

We tend the compost bin! adding this, adding that

Until our worms are very fat.

Now we spread the rich mounds of dark brown,

All over the ground.

We walk in the cool of evening,

While the sun is still high.

Days are long but soon will be gone.

We are so grateful for all that is ours.

All the earth!

All the flowers!

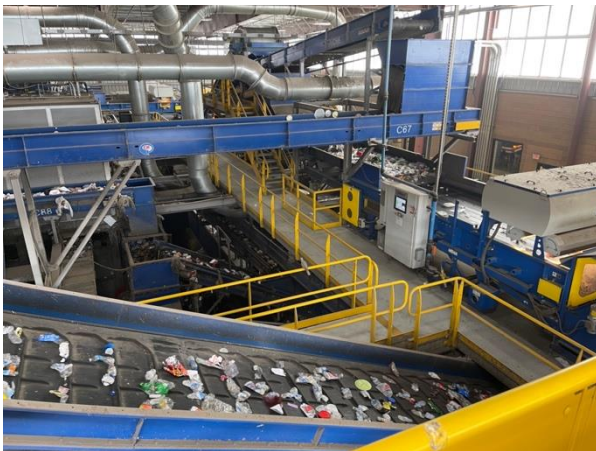
Do You Know What A “MRF” Is?

By George Unrine

We learned at the Pacific Region Convention that a MRF is a **Material Recovery Facility**. It is the place where the contents of your mixed item, recycle bin are processed to sort and package materials that can be reused by product manufacturers. At this MRF the materials of interest are paper / cardboard, plastic, glass, and aluminum / steel.



Of course, these are not the only things people place in their recycle bins. They may place anything into the bin that they think can be recycled. Two very common things mentioned by our guide were watering hoses and clothing. These things may be recyclable - but not at this MRF. Any items not usable by a MRF are removed and forwarded on to the land fill. They cause extra work for the people maintaining the machinery and working on the processing line.



The MRF we visited was not the largest by size but was the largest in terms of material processed each day. Processing is done along a line of conveyor belts that move the material through the three floors of a football field size building. Machines and people work to sort the material into the four categories of interest. Among the properties machines use to sort the material are size, weight, dimension (2D or 3D), visual, and magnetic. These properties cause the material to be diverted to the correct processing streams. Several dozen workers catch what the machines miss.

The output of each stream is then packaged for manufacturers that the MRF has contracts with. Manufacturers purchase the packaged material as raw ingredients for their products. While the sorting process need not be perfect, it is very important that the MRF maintains contamination levels that are acceptable to the manufacturer. If these levels are not maintained, the MRF will lose the contract.

You can help the environment by following the recycling instructions provided by the city in which you live. Not all MRF's have the same capabilities. The best suggestion I received on the tour is to place small items in clear, plastic bags. Bags will be ripped open if workers can see inside, otherwise if they are not clear, the bags will be tossed for safety concerns. I didn't think to ask if they really want to rip open a bag of shredded documents.

The Mojave Desert

by **Judy Unrine**, Pollinator Chairman



Whether traveling by car, plane, train, or bus, members arriving in Las Vegas, Nevada were treated to a dry, dusty landscape. The Mojave Desert, a landscape seeming devoid of water and color stretches miles and miles into the horizon.

What a surprise for those asking about the dead, brown shrubs to learn that they are actually alive and doing their part, even during climate change, to keep the desert alive.

At a distance the Creosote bush can't be appreciated, yet with closer examination the dark green, lustrous leaves and golden flowers make for an attractive combination of color and life. Far from being a dead landscape the Mojave Desert, located in the American Southwestern



States and Mexico, is considered one of the most diverse habitats of North America, stretching from the Pacific Ocean to Alpine meadows.

On our drive to the Pacific Region Convention in Las Vegas we stopped at Joshua Tree National Park. The Joshua Tree, *Yucca brevifolia*, has a unique shape that mimics a tree with branches that appear to be arms. Each tree is different and can grow between three to nine feet tall before branching. At maturity they can grow 20 to 70 feet tall. They weren't blooming, but when they do, spikey leaves and lush, creamy white blooms.



Sea Breeze editor
Marilyn Rubin

Riviera Garden Club information:

Check out our website at www.rivieragardenclub.org

Email: president@rivieragardenclub.org